

GIFT PLANTATION

A Natural Waterfront Community

Within the natural beauty of the Stono River, ancient Spanish moss draped oaks and a unique rolling landscape, Gift Plantation provides it's residents an idyllic environment to enjoy life and living.

Gift Plantation enjoys the benefit of seclusion, yet also enjoys the advantage of quick access to everything from shopping to world-class golf. Having set the standard of excellence for over ten years in "Plantation" communities throughout the lowcountry, Gift Plantation continues it's heritage of paced and quality growth with the edition of phase III to the community.

Phase III will feature the best in authentic lowcountry style home designs.

{843-559-5225} {800-301-9702} {www.giftplantation.com}

GIFT PLANTATION

A Natural Waterfront Community

Within the natural beauty of the Stono River, ancient Spanish moss draped oaks and a unique rolling landscape, Gift Plantation provides it's residents an idyllic environment to enjoy life and living.

Gift Plantation enjoys the benefit of seclusion, yet also enjoys the advantage of quick access to everything from shopping to world-class golf. Having set the standard of excellence for over ten years in "Plantation" communities throughout the lowcountry, Gift Plantation continues it's heritage of paced and quality growth with the edition of phase III to the community.

Phase III will feature the best in authentic lowcountry style home designs.

{843-559-5225} {800-301-9702} {www.giftplantation.com}

Available Properties

Gift Plantation

Phase 2

Type	Description	Size	Price
Lot	Lot # 113 - Interior	.663 acres	\$70,950
Lot	Lot # 114 - Interior	.604 acres	\$69,950
Lot	Lot # 44 - Waterfront	1.00 acres	\$398,000
Lot	Lot # 83 - Interior	1.15 acres	\$167,000
Home	3883 Laurel Point Road	2405 sq ft	\$349,950
Home	3923 Gift Blvd	4400 sq ft	\$594,000



Available Properties

Gift Plantation

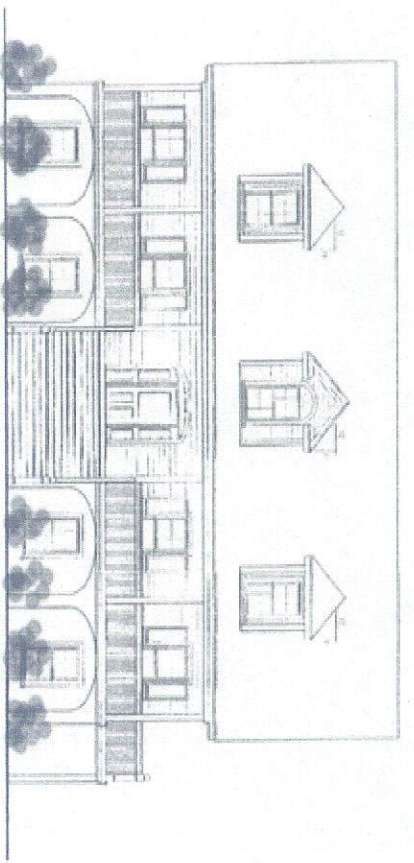
Phase 2

Type	Description	Size	Price
Lot	Lot # 113 - Interior	.663 acres	\$70,950
Lot	Lot # 114 - Interior	.604 acres	\$69,950
Lot	Lot # 44 - Waterfront	1.00 acres	\$398,000
Lot	Lot # 83 - Interior	1.15 acres	\$167,000
Home	3883 Laurel Point Road	2405 sq ft	\$349,950
Home	3923 Gift Blvd	4400 sq ft	\$594,000



{843-559-5225} {800-301-9702} {www.giftplantation.com}

{843-559-5225} {800-301-9702} {www.giftplantation.com}



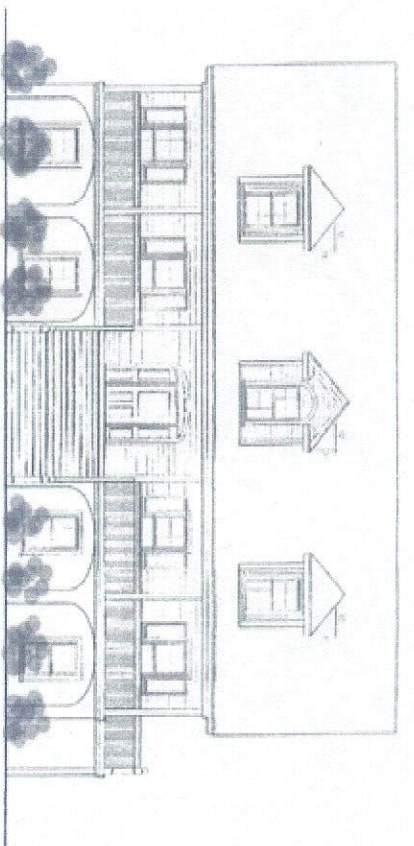
3883 Laurel Point Road – Lot 110

2405 Sq. Ft Living Area - \$349,950

Interior Amenities

- Hardwood and ceramic tile floors
 - Moen Monticello bath fixtures
 - Formal dining room includes chair rails
 - Great room, covered front porch, entertainment center and bookcase
 - Crown molding in all living areas downstairs
 - Kitchen with custom cabinets
 - Cooktop with down draft
 - Microwave / oven combo
 - Corian counter tops
 - Pantry
 - Separate breakfast area
- Screened Porch
 - Rear Deck
 - Propane grill stubout
 - Landscaped yard
 - Hardi Plank with stucco
 - Automatic garage door

Exterior Amenities



3883 Laurel Point Road – Lot 110

2405 Sq. Ft Living Area - \$349,950

Interior Amenities

- Hardwood and ceramic tile floors
 - Moen Monticello bath fixtures
 - Formal dining room includes chair rails
 - Great room, covered front porch, entertainment center and bookcase
 - Crown molding in all living areas downstairs
 - Kitchen with custom cabinets
 - Cooktop with down draft
 - Microwave / oven combo
 - Corian counter tops
 - Pantry
 - Separate breakfast area
- Screened Porch
 - Rear Deck
 - Propane grill stubout
 - Landscaped yard
 - Hardi Plank with stucco
 - Automatic garage door

Exterior Amenities

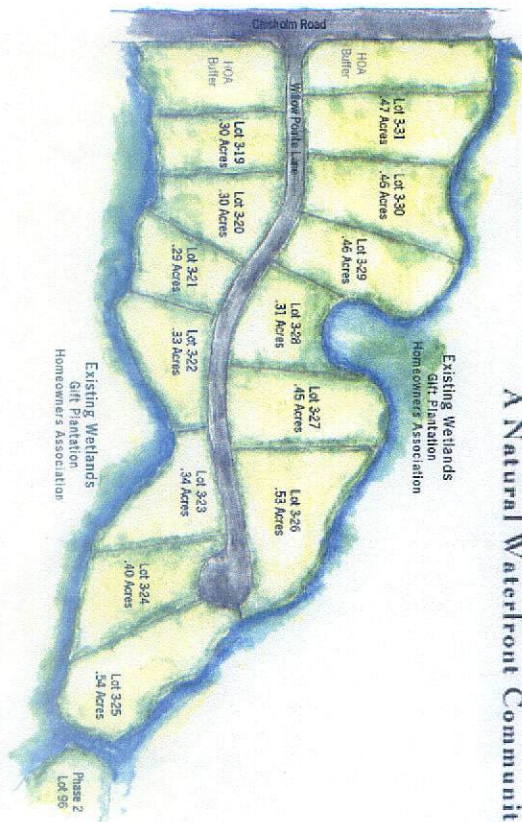
{843-559-5225} {800-301-9702} {www.giftplantation.com}

{843-559-5225} {800-301-9702} {www.giftplantation.com}



Phase 3
Gift Plantation

A Natural Waterfront Community



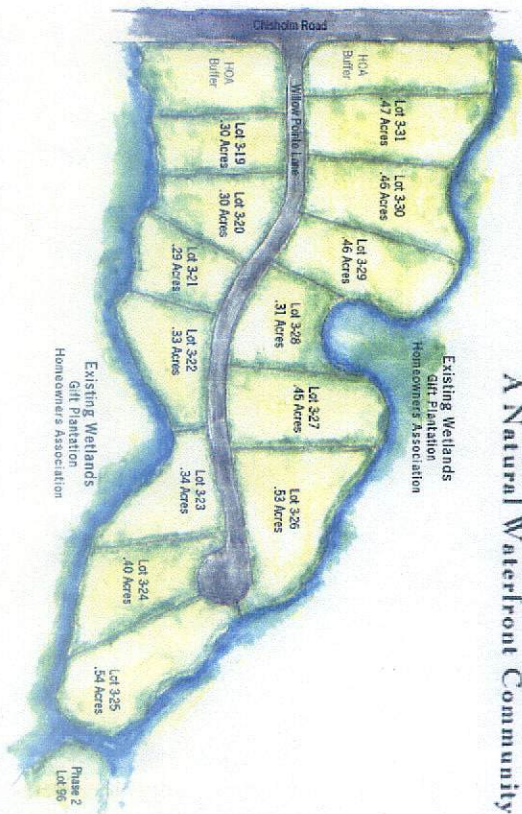
Available Properties

Lot #	Size (acres)	Price
3-19	.30	\$56,000
3-20	.30	\$76,500
3-21	.29	\$76,500
3-22	.33	\$68,500
3-23	.34	\$72,500
3-27	.45	\$78,500
3-28	.31	\$68,000
3-30	.46	\$78,500
3-31	.47	\$59,000



Phase 3
Gift Plantation

A Natural Waterfront Community



Available Properties

Lot #	Size (acres)	Price
3-19	.30	\$56,000
3-20	.30	\$76,500
3-21	.29	\$76,500
3-22	.33	\$68,500
3-23	.34	\$72,500
3-27	.45	\$78,500
3-28	.31	\$68,000
3-30	.46	\$78,500
3-31	.47	\$59,000

{843-559-5225} {800-301-9702} {www.giftplantation.com}

{843-559-5225} {800-301-9702} {www.giftplantation.com}



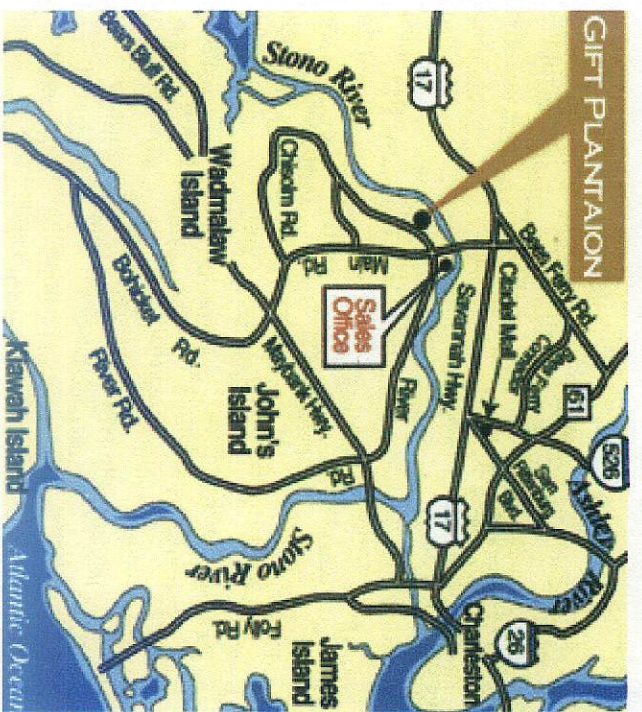
Locality

- 1.5 miles south on Chisolm Rd. & Main Rd. intersection
- 3 miles east of Hwy 17
- 8 miles from Citadel Mall / I-526
- 14 miles to historic downtown Charleston
- 6 miles to surrounding golf courses
- 4 miles to marina
- 2 miles to public boat ramp
- 12 miles to Charleston International Airport
- 5 miles to hospital & shopping

Amenities

- Delightful clubhouse
- Spacious swimming pool
- Lighted tennis courts
- Picnic & play areas
- Private recreational islands
- Fishing pier / floating dock
- Deep water dock on ICW
- Boardwalk

{843-559-5225} {800-301-9702} {www.giftplantation.com}



Locality

- 1.5 miles south on Chisolm Rd. & Main Rd. intersection
- 3 miles east of Hwy 17
- 8 miles from Citadel Mall / I-526
- 14 miles to historic downtown Charleston
- 6 miles to surrounding golf courses
- 4 miles to marina
- 2 miles to public boat ramp
- 12 miles to Charleston International Airport
- 5 miles to hospital & shopping

Amenities

- Delightful clubhouse
- Spacious swimming pool
- Lighted tennis courts
- Picnic & play areas
- Private recreational islands
- Fishing pier / floating dock
- Deep water dock on ICW
- Boardwalk

{843-559-5225} {800-301-9702} {www.giftplantation.com}